



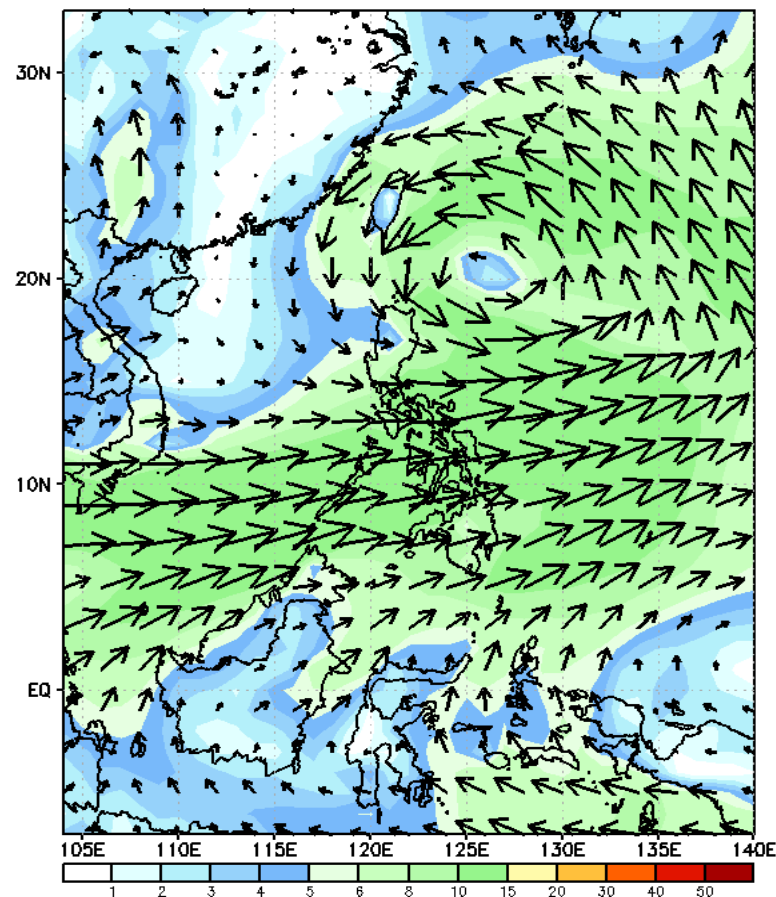
Week 1 & Week 2 Forecast for the Philippines using GEFS Model



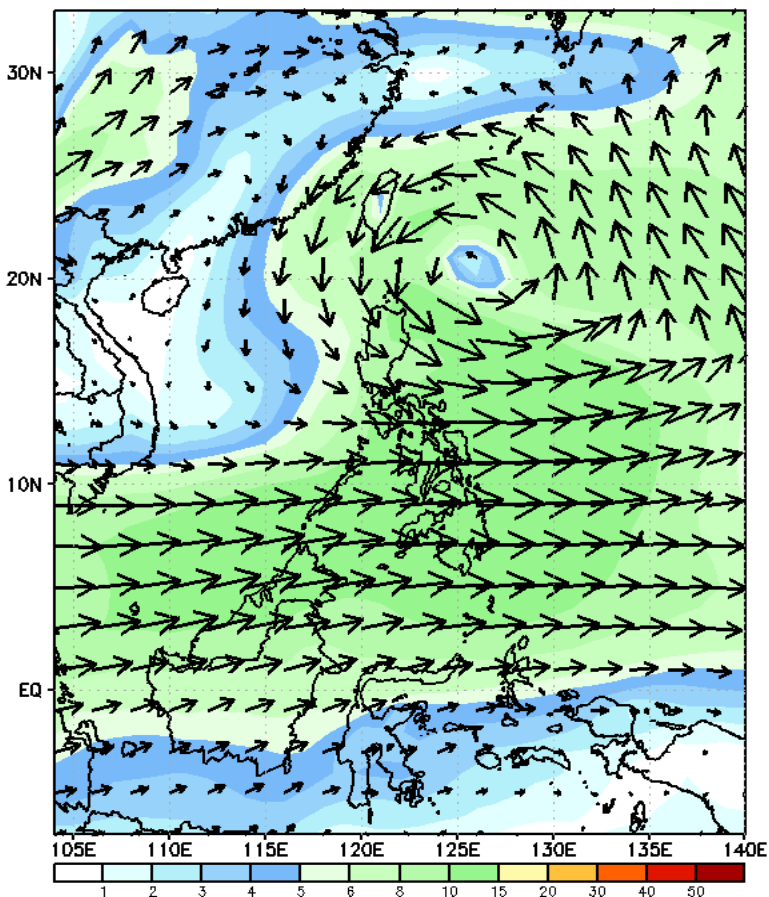
GEFS Week-1 Forecasts: Wind Forecast

Week 1: May 26-Jun 01, 2023

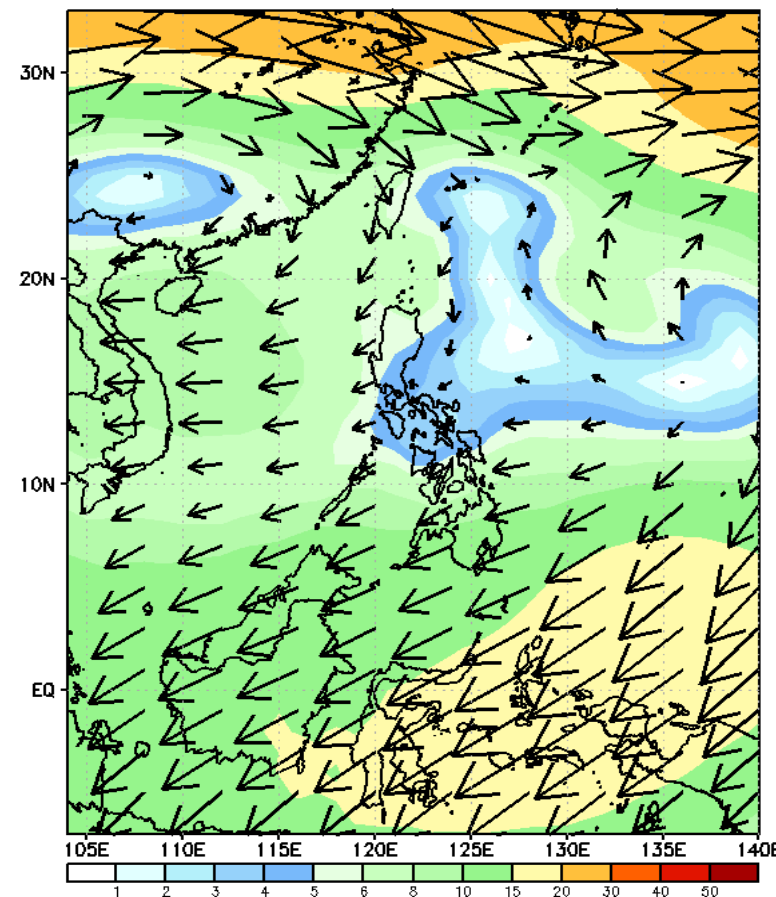
GEFS Week-1 850-hPa Wind Total
Valid: 20230526 - 20230601



GEFS Week-1 700-hPa Wind Total
Valid: 20230526 - 20230601



GEFS Week-1 200-hPa Wind Total
Valid: 20230526 - 20230601



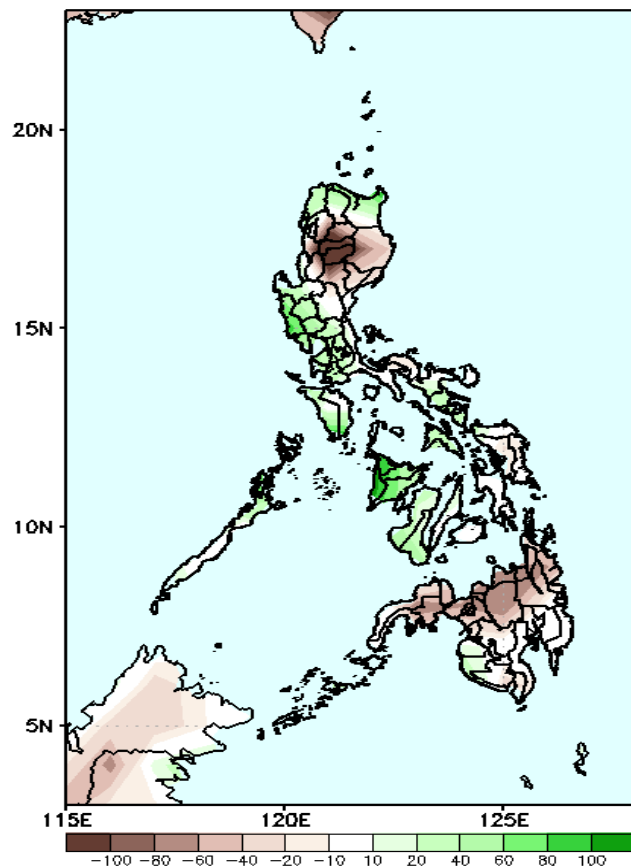
Southwest Monsoon is forecasted to prevail in most parts of the country. Moreover, a Cyclonic Circulation is forecasted to move closer to Northern Luzon

Precipitation Anomaly and Exceedance Probability > 25/50 mm

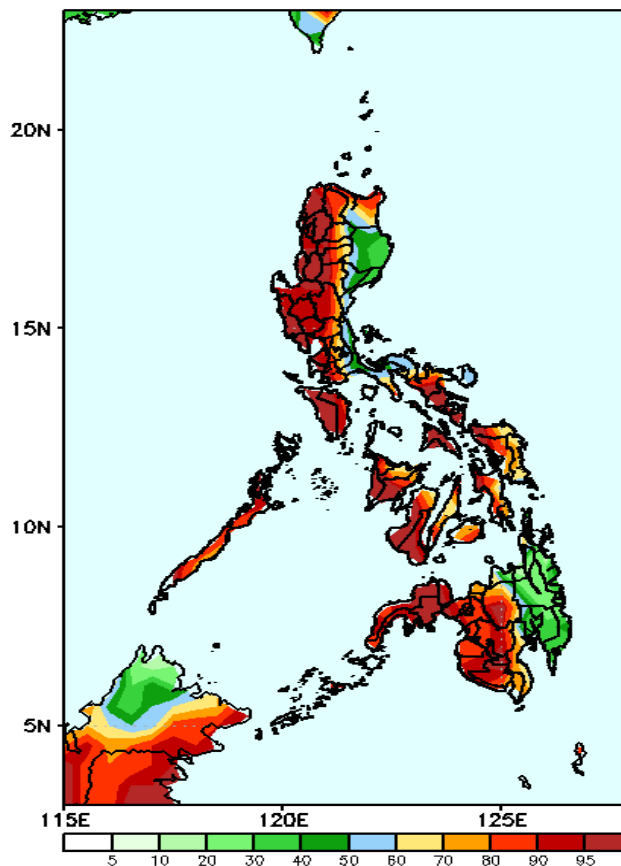


Week 1: May 26-Jun 01, 2023

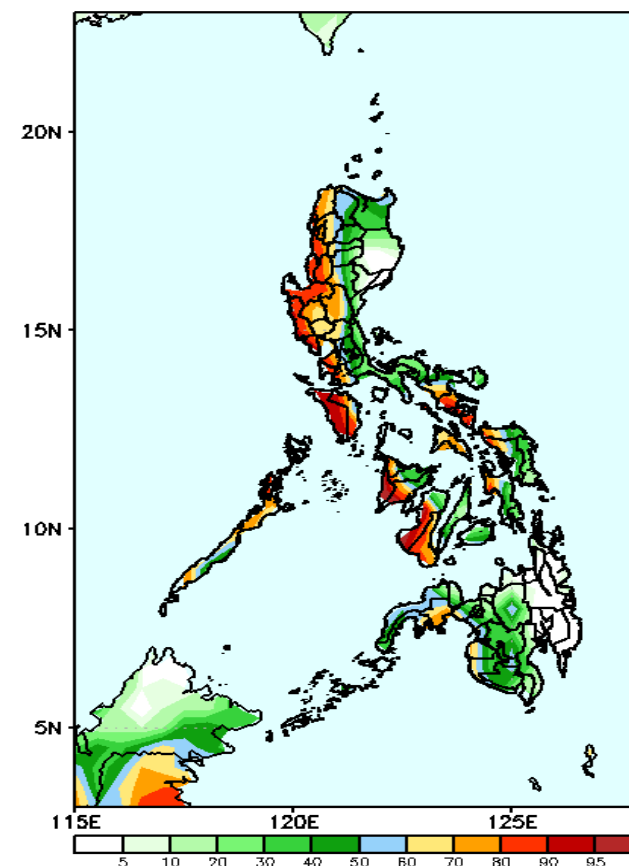
GEFS Week-1 Precip Anomaly
Valid: 20230526 - 20230601



GEFS Week-1 Exceedance Prob. > 25mm
Valid: 20230526 - 20230601



GEFS Week-1 Exceedance Prob. > 50mm
Valid: 20230526 - 20230601



Rainfall deficit of more than 100mm is expected in most parts of Kalinga, Mt. Province and Ifugao; 20-80mm in Isabela, Nueva Viscaya and northern Mindanao including Zamboanga Peninsula while up to 100mm increase of rainfall in Mindoro; 20-60mm in Ilocos Norte, Apayao, Cagayan, most parts of central and southern Luzon and western Visayas.

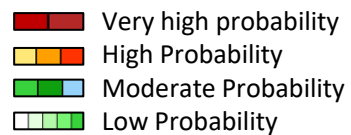
High to a very high probability to exceed 25mm of rainfall in Visayas and over most parts of Luzon and Mindanao, especially in the western side.

High to a very high probability to exceed 50mm of rainfall in the western section of the country, southern portion of the Bicol region, and western portion of Samar and Leyte while low to moderate over the rest of the country.

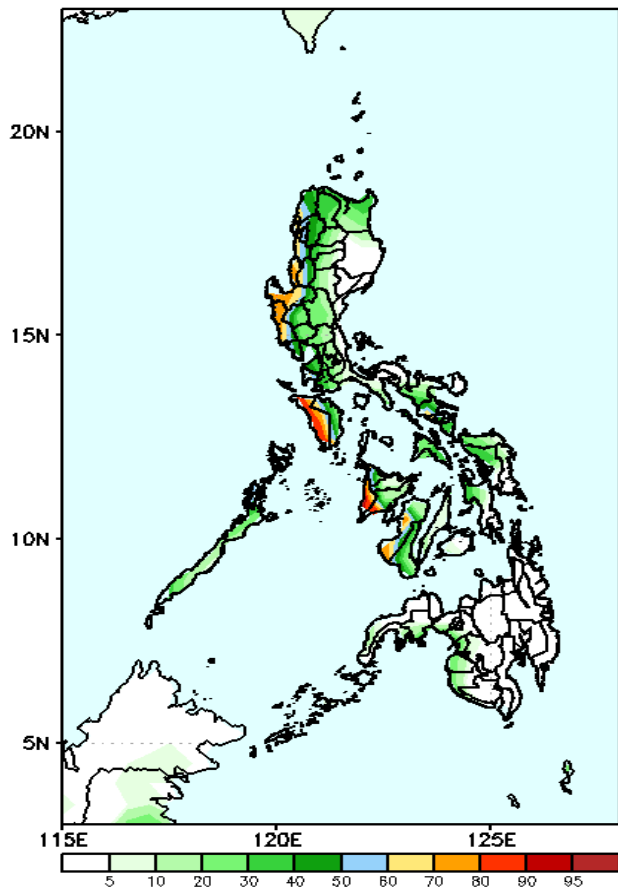


Exceedance Probability > 100/150/200 mm

Week 1: May 26-Jun 01, 2023

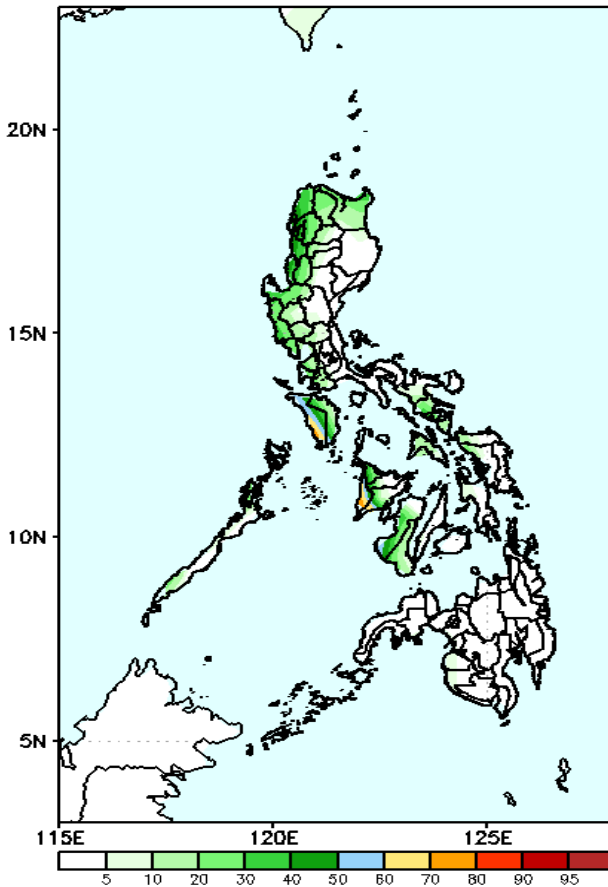


GEFS Week-1 Exceedance Prob. > 100mm
Valid: 20230526 - 20230601



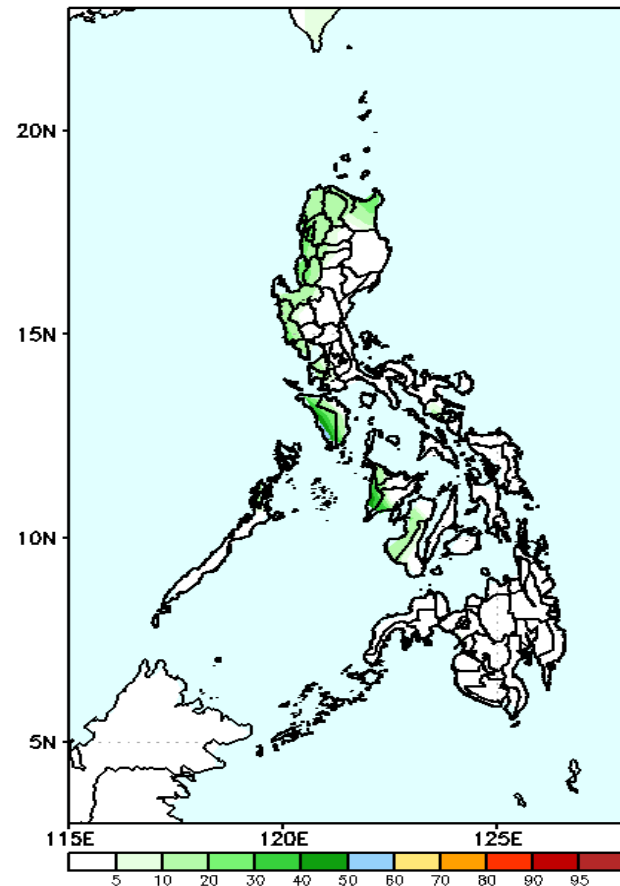
Moderate to high probability to exceed 100mm of rainfall over the western section of Luzon and Western Visayas while low to moderate likelihood over the rest of the country.

GEFS Week-1 Exceedance Prob. > 150mm
Valid: 20230526 - 20230601



Moderate to high probability to exceed 150mm of rainfall over Occidental Mindoro and Antique while low to moderate likelihood over the rest of the country.

GEFS Week-1 Exceedance Prob. > 200mm
Valid: 20230526 - 20230601



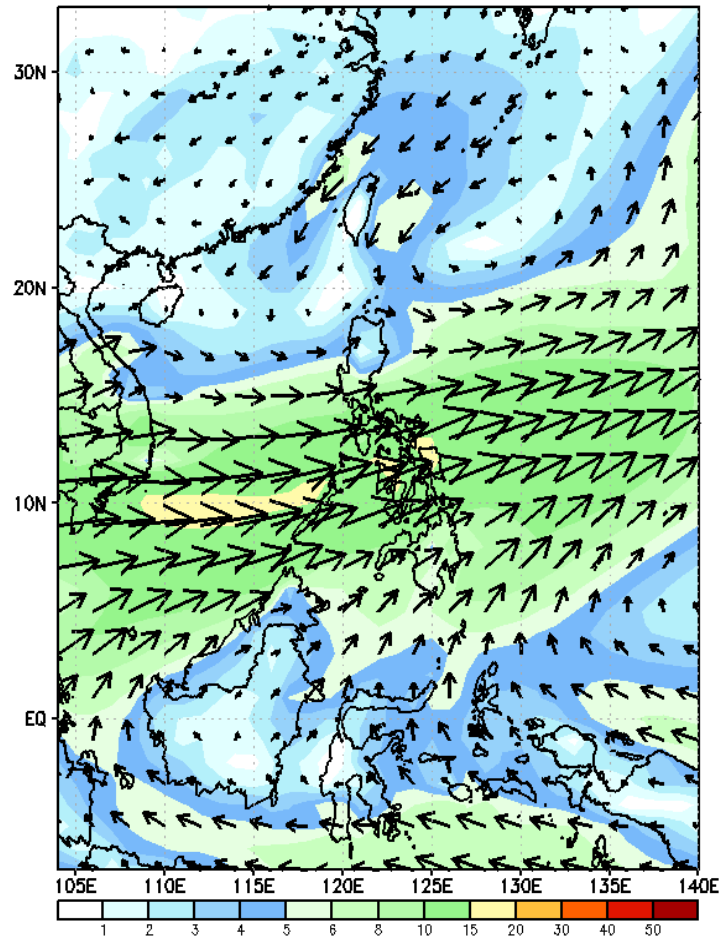
Low probability of rainfall to exceed 200mm in most parts of the country during the forecast period.



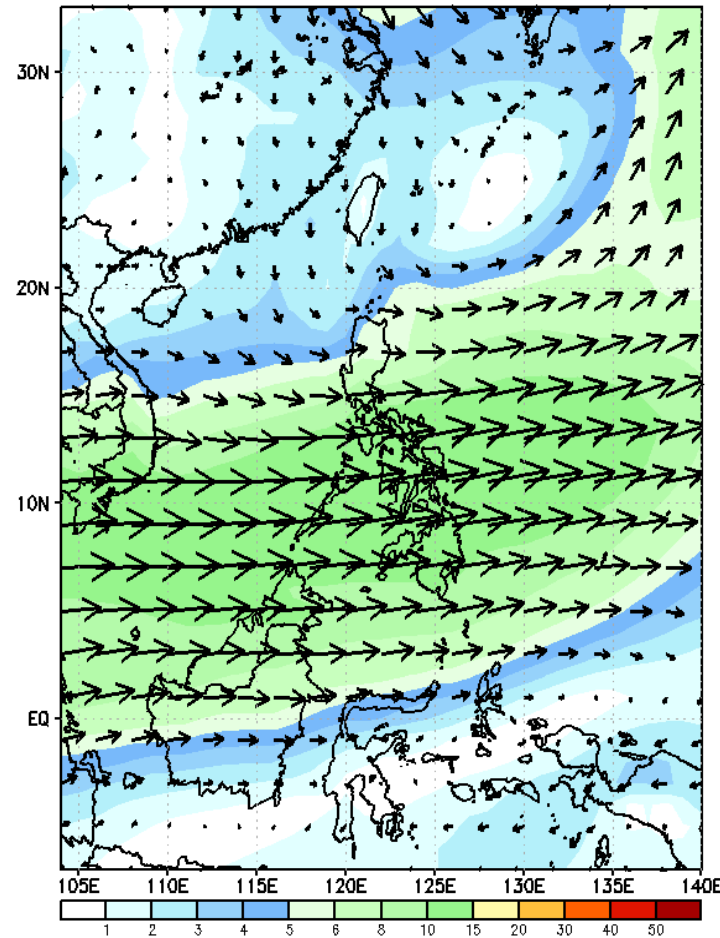
GEFS Week-2 Forecasts: Wind Forecast

Week 2: June 02-08, 2023

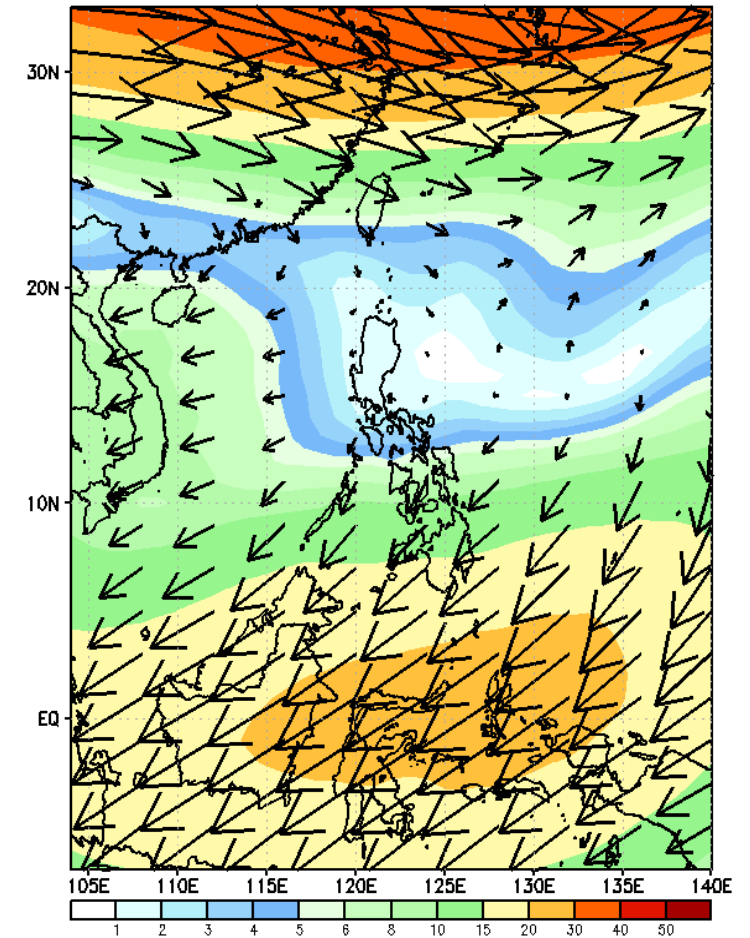
GEFS Week-2 850-hPa Wind Total
Valid: 20230602 - 20230608



GEFS Week-2 700-hPa Wind Total
Valid: 20230602 - 20230608



GEFS Week-2 200-hPa Wind Total
Valid: 20230602 - 20230608



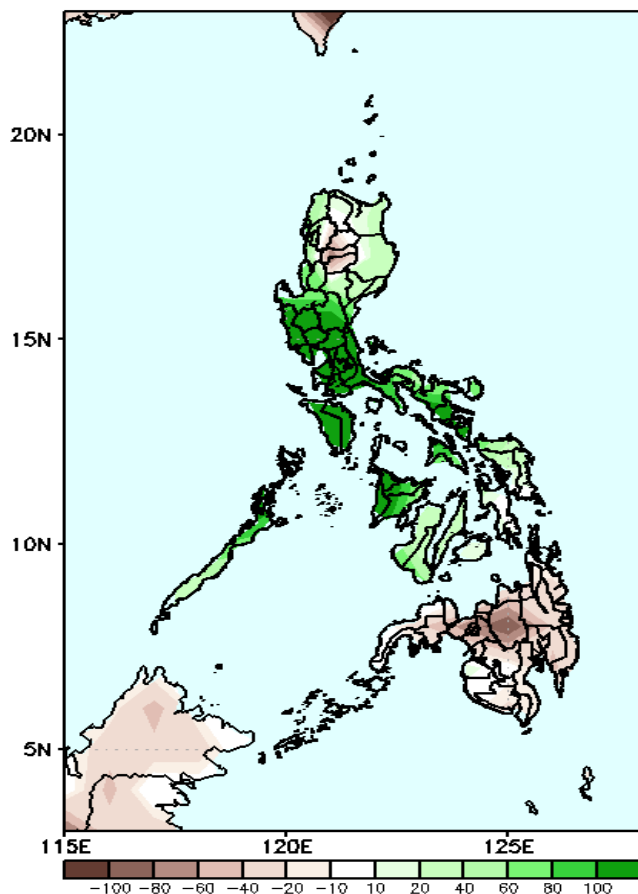
Southwest monsoon is forecasted to prevail in most parts of the country.

Precipitation Anomaly and Exceedance Probability > 25/50 mm



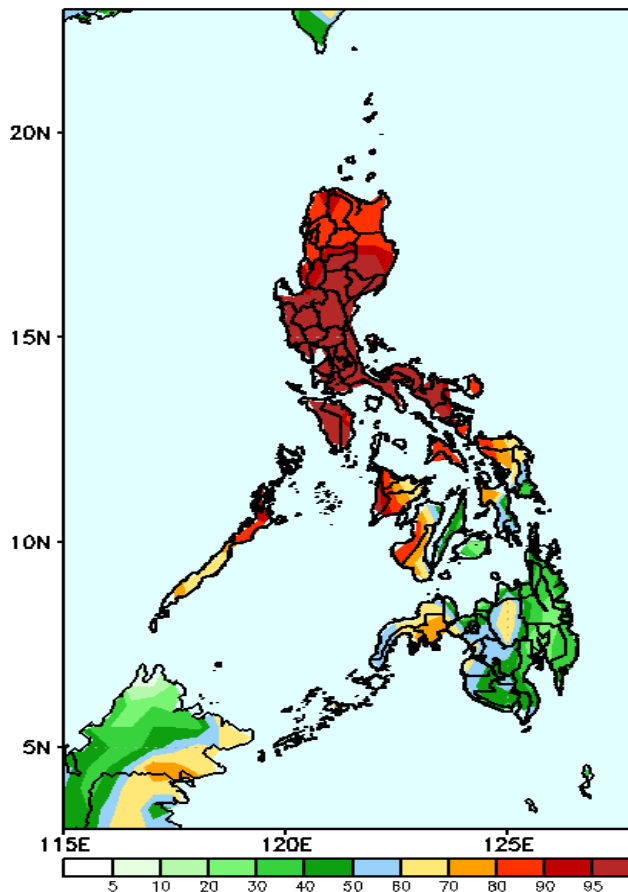
Week 2: June 02-08, 2023

GEFS Week-2 Precip. Anomaly
Valid: 20230602 - 20230608



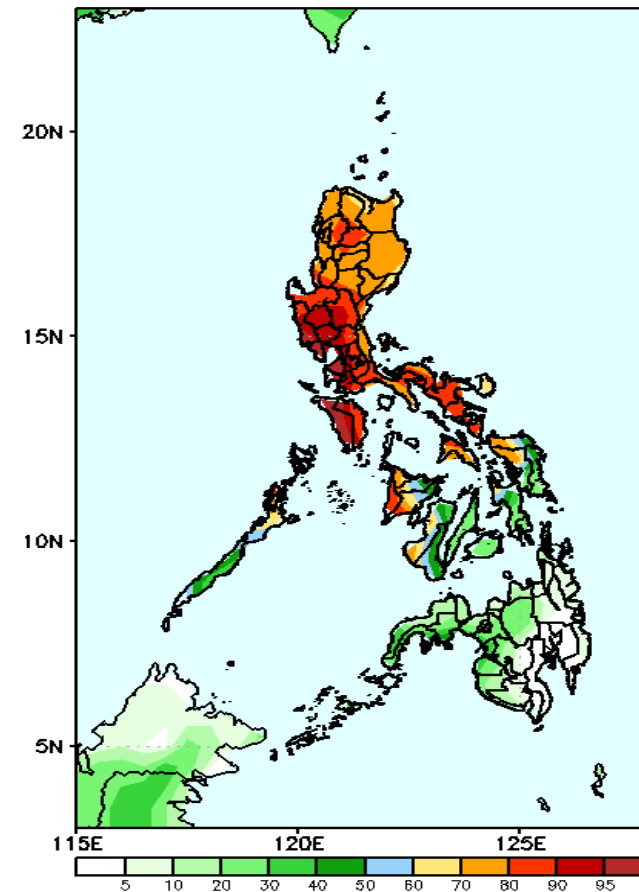
Rainfall increase of more than 100mm is expected in most parts of central and southern Luzon and Panay Island; 20-80mm for the rest of Luzon and Visayas while rainfall deficit of 20-80mm is more likely in Mindanao.

GEFS Week-2 Exceedance Prob. > 25mm
Valid: 20230602 - 20230608



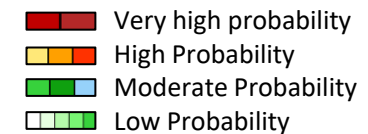
High to a very high probability to exceed 25mm of rainfall over Luzon, most parts of Western and Eastern Visayas, Zamboanga Peninsula, BARMM, and Bukidnon while low to moderate probability for the rest of Visayas and Mindanao

GEFS Week-2 Exceedance Prob. > 50mm
Valid: 20230602 - 20230608



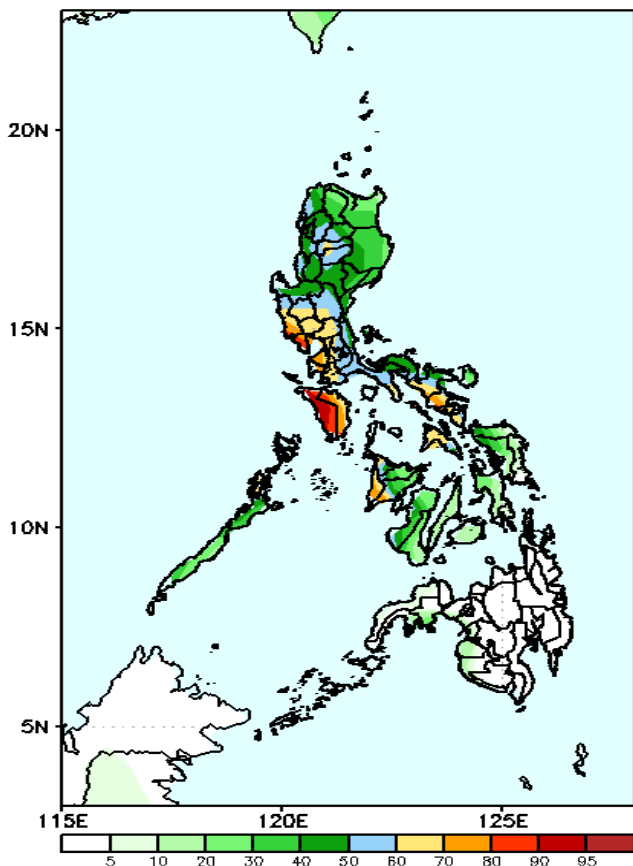
High to very probability to exceed 50mm of rainfall in Luzon, Western Visayas, Negros Oriental, and the northern parts of Leyte and Samar Provinces while low to moderate probability over the rest of Visayas and Mindanao.

Exceedance Probability > 100/150/200 mm



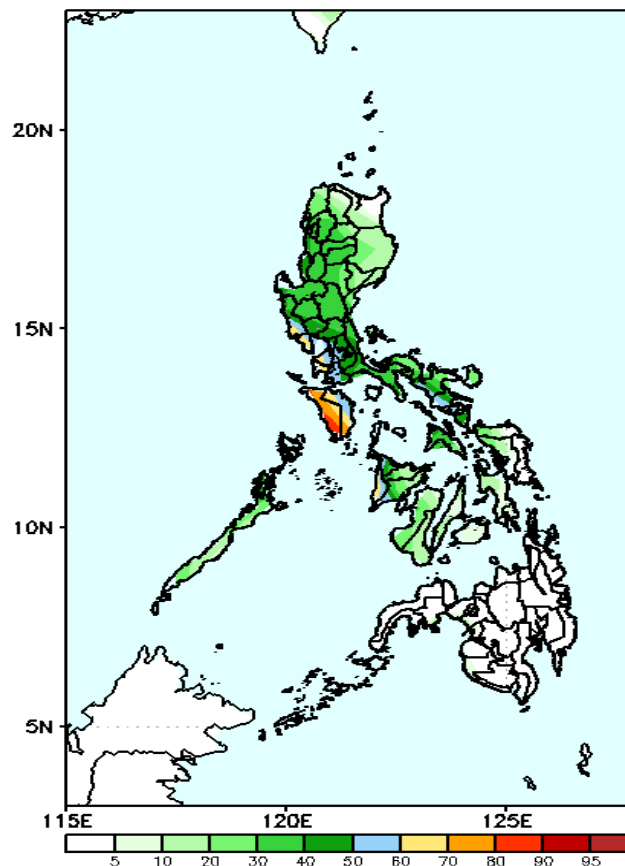
Week 2: June 02-08, 2023

GEFS Week-2 Exceedance Prob. > 100mm
Valid: 20230602 - 20230608



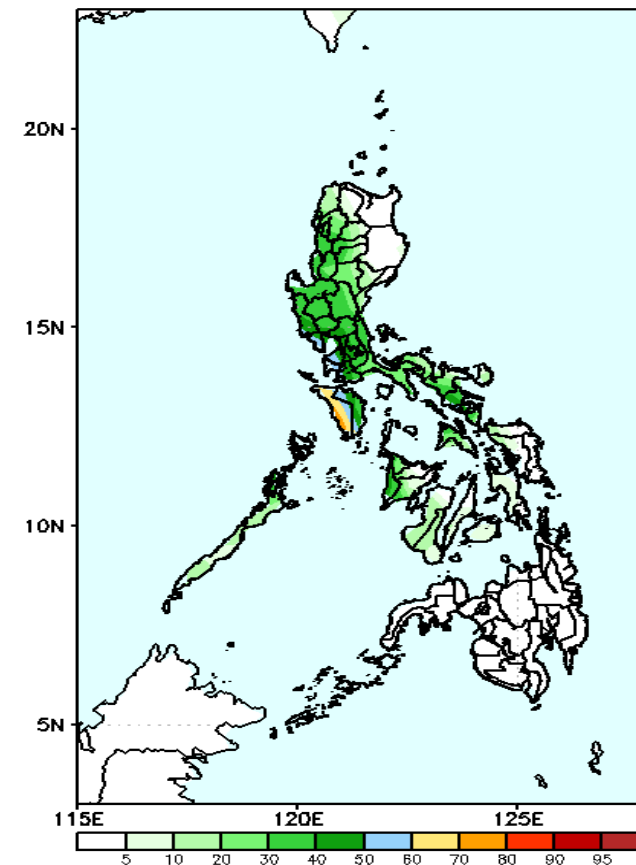
High to very high probability to exceed 100mm of rainfall over Central Luzon, NCR, CALABARZON, most parts of MIMAROPA, southern portions of the Bicol Region, and western portions of Panay Island while low to moderate likelihood over the rest of the country.

GEFS Week-2 Exceedance Prob. > 150mm
Valid: 20230602 - 20230608



Moderate to high probability to exceed 150mm of rainfall over Mindoro Provinces, the southwestern portion of the Bicol Region, and the western sections of CALABARZON, NCR, Central Luzon, Northern Palawan, and Panay Island while low probability for the rest of the country.

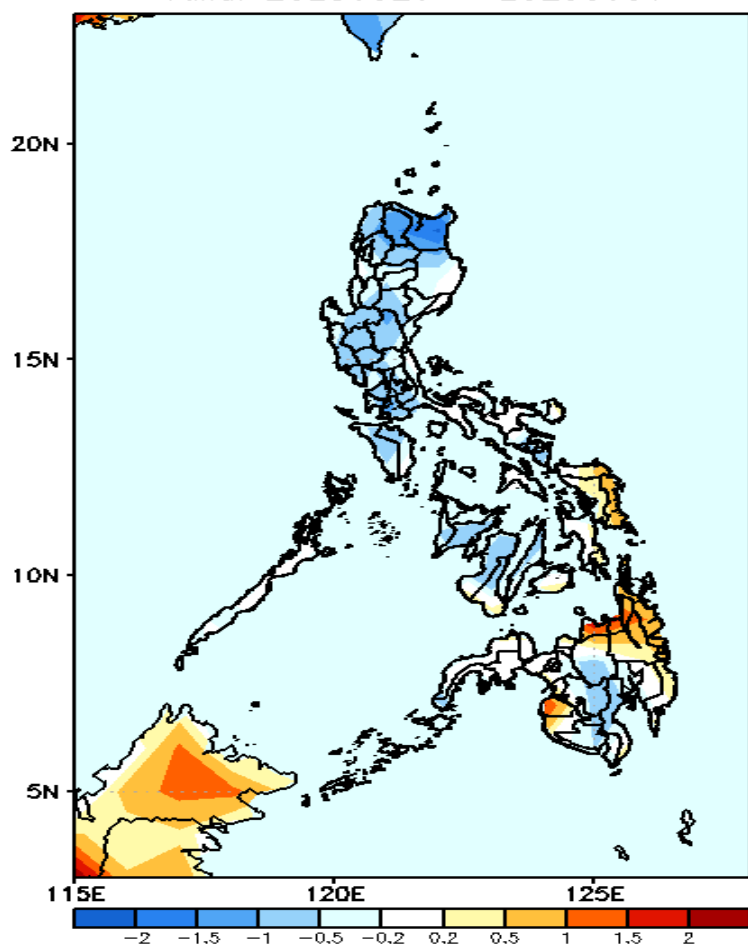
GEFS Week-2 Exceedance Prob. > 200mm
Valid: 20230602 - 20230608



Moderate to high probability to exceed 200mm of rainfall over Mindoro Provinces, the southwestern portion of the Bicol Region, and the western sections of CALABARZON, NCR, Central Luzon, Northern Palawan, and Panay Island while low probability for the rest of the country.

GEFS Week-1 & 2 Forecasts: T2m Anomaly

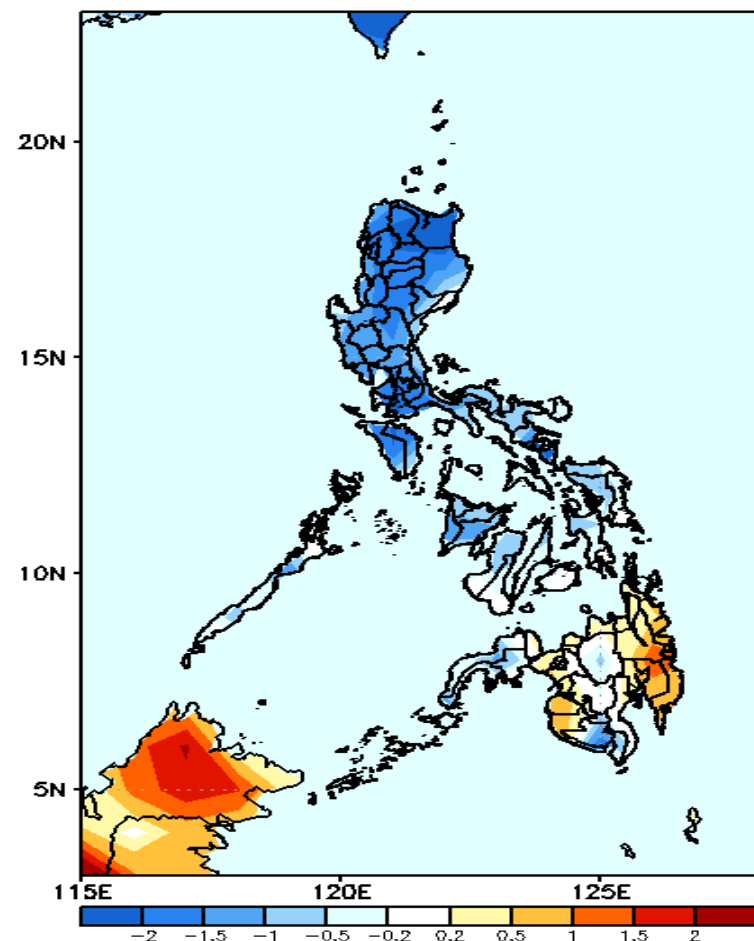
GEFS Week-1 T2m Anomaly
Valid: 20230526 – 20230601



2m Temperature Week 1: May 26-Jun 01, 2023

Average to cooler surface air temperature will likely experience in most parts of the country except Samar provinces, Misamis Oriental, CARAGA Region and Maguindanao where slightly warmer to warmer than average temperature will likely have during the forecast period.

GEFS Week-2 T2m Anomaly
Valid: 20230602 – 20230608



2m Temperature Week 2: June 02-08, 2023

Cooler than average surface air temperature will likely experience in Luzon, Panay Island and South Cotabato; Average to slightly warmer for the rest of Visayas, Zamboanga Peninsula, Bukidnon and Davao del Sur while slightly warmer to warmer than average temperature is forecasted for the rest of Mindanao.